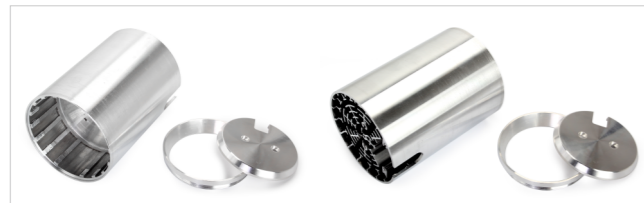


T SERIES track light

T series track light adopts the latest technology of cold forging. The lamp body is made of #1070 aluminium ingot by one time forming without secondary process like splicing, riveting and soldering. The cooling effect of radiator is completely same as that of raw aluminum material. Only 3 steps to make an aluminium ingot turn into a lamp:



1, Put an aluminium ingot into hydropress, getting a primary lamp model.



2. Lathe the lamp model, getting a delicate lamp body.

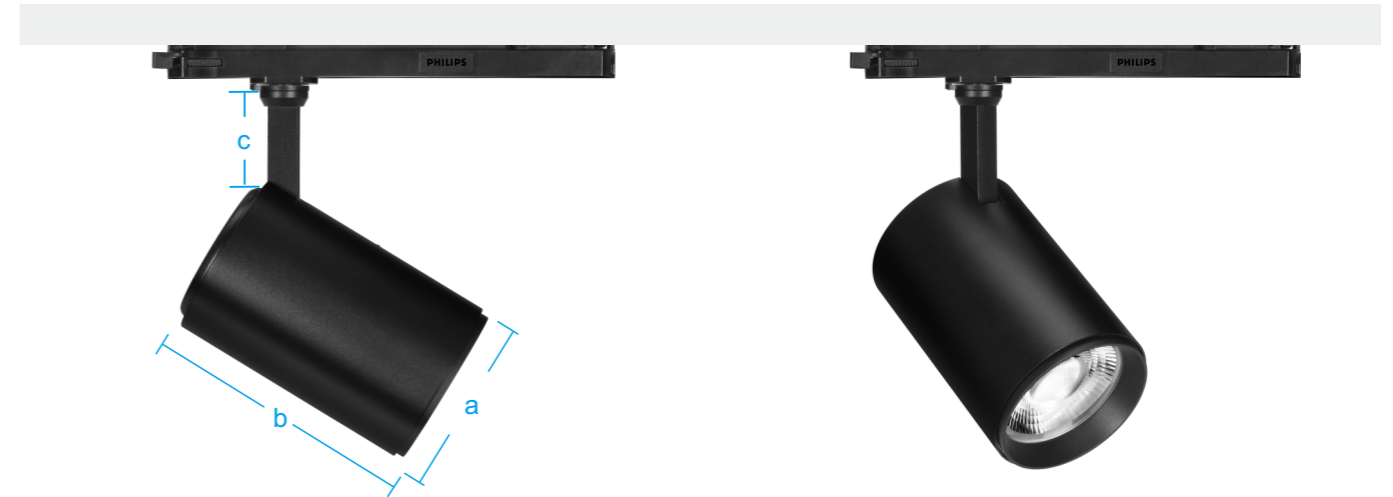
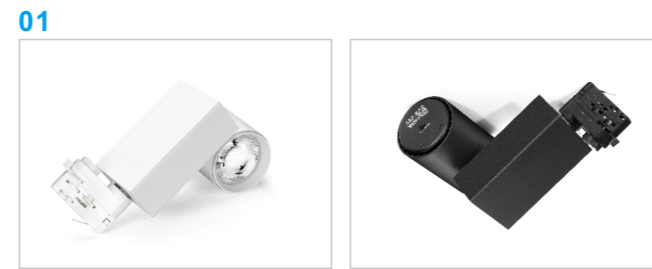


3, Assemble lamp body with other parts.

The excellent heat conductivity determines lamp quality, combined with high performance light source, we can control our lamp's light decay <10% within 30000hrs, <20% within 50000hrs. The cooling effect of cold forging aluminium is 30% higher than that of same size of #6063 profile aluminium and double better than die casting aluminium.

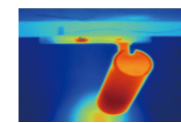
The Thermal conductivity of different aluminum material:

- Cold forging aluminium (#1070): 226.w/m.k,
- Profile aluminium (#6063): 180.w/m.k
- Die casting aluminium (#ADC12): 98.w/m.k



Features:

T03 series track light is an advanced design that built driver into the track adapter, it not only has the mini elegant appearance of built-in driver track light, but also has the stability of independent heat dissipation of the external integrated track adapter.



Independent heat dissipation imaging map, the heat quantity of driver and lamp body are completely independent.

Supports CCT



You could choose 3 different color temperature via dip switch, and the total power remains the same.

Supports beam angle



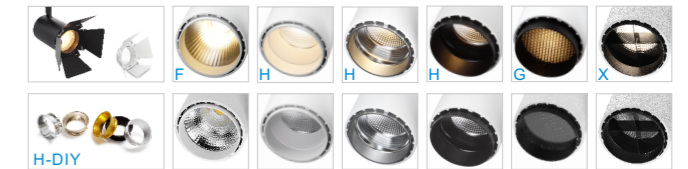
Supports beam angle optional function, you could choose 3 different angles via dip switch, and the total power remains the same.

| Function | Form | F/H type | Zoomable type(V) | Zoomable and Shapable type(S) |
|------------------------------------|------|----------|------------------|-------------------------------|
| CCT optional via dip switch | | ✓ | ✓ | ✓ |
| Beam angle optional via dip switch | | ✓ | ✗ | ✗ |
| Intelligent control system | | DALI | DALI | DALI |
| Light shield | | ✓ | ✗ | ✗ |
| Housing color | | | Black, white | |

Optical parameters: CCT: 2700K, 3000K, 4000K, 5000K, 6000K; CRI>90, R9>50/CRI>97, R9>95

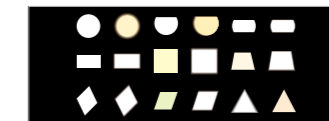
| Item No. | Power(W) | Size (mm) | Illumination 3000K CRI>90 | Beam angle | N. W. | Input voltage |
|----------|----------|--------------------|---------------------------|-----------------|-------|---------------|
| T4503 | 45W | a=φ95,b=150, c=50, | 3800-4500lm | 24° 38° 50° | 1.1kg | |
| T3503 | 35W | a=φ85,b=135, c=50, | 3000-3600lm | 10° 24° 38° 60° | 0.9kg | AC200-240V |
| T2503 | 25W | a=φ75,b=125, c=50, | 2200-2600lm | 10° 24° 38° 55° | 0.7kg | AC100-277V |
| T1503 | 15W | a=φ65,b=115, c=50, | 1200-1600lm | 10° 24° 38° 60° | 0.5kg | |

Supports F/H/H-DIY optical form

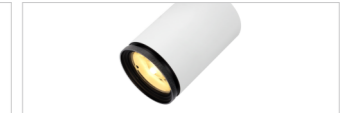


Different optical forms can be selected according to actual lighting requirements. High brightness with UGR19-21(F); moderate brightness with UGR12-17 (H); low brightness with UGR <9 (G); and for some special visual angle (like up and down escalators lighting), a moderate brightness anti-glare type (X) is a good solution.

Support zoomable and shapable form (S)



Support zoomable form(V)



Different from common zoomable track light on the market which light loss might be 50-70% loss (eg, it has 3000LM at 60° but may be only 1000LM at 10°). Our new technology for zoomable design can assure the light loss <10% when adjusting beam angles.

The latest focusing and shaping technology, can freely change the light spot shape, size, sharpness, etc. Its lighting effect is comparable to advertising backlight, commonly used for cultural relics, paper paintings, and other display lighting.