



DF SERIES 7-50W LED DOWNLIGHT



DF & DFT series are the fixed recessed downlight with larger light-emitting area and smaller beam angle compared with DB & DBT series.

-- Patent Design!

Fixed design, no rotatable downlight

Larger light emitting area and smaller beam angle, different color of housing for option

Support almost all the famous Light source and Driver

Perfectly compatible with the same light fixture, same size with different light source and different driver

Completely free solder assembling

Replace any accessories perfectly without any damages, no need soldering tools

Perfect secondary optical design:

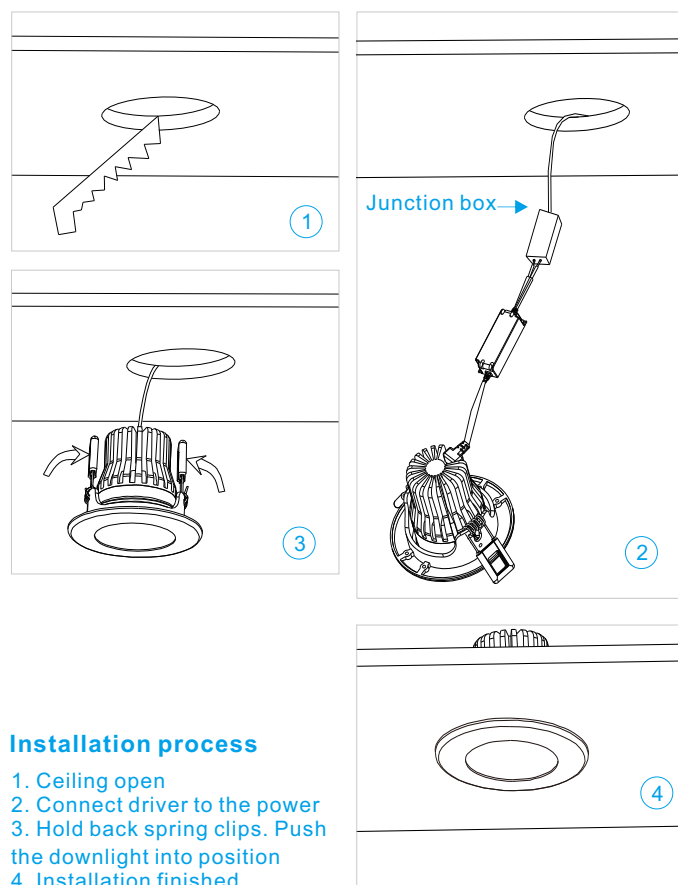
Optional beam angle: 8 - 110 deg, can be used for wall washing effect

High CRI, High lumens, Low decay LED (L-80)

Basic characteristic: 150lm/w under CRI>90 & 3000K

Flicker free driver & 5 years warranty for whole lamp

Support Triac dim, 1-10V dim, DALI dim, DMX dim, 2.4 G dim, warm dim, etc



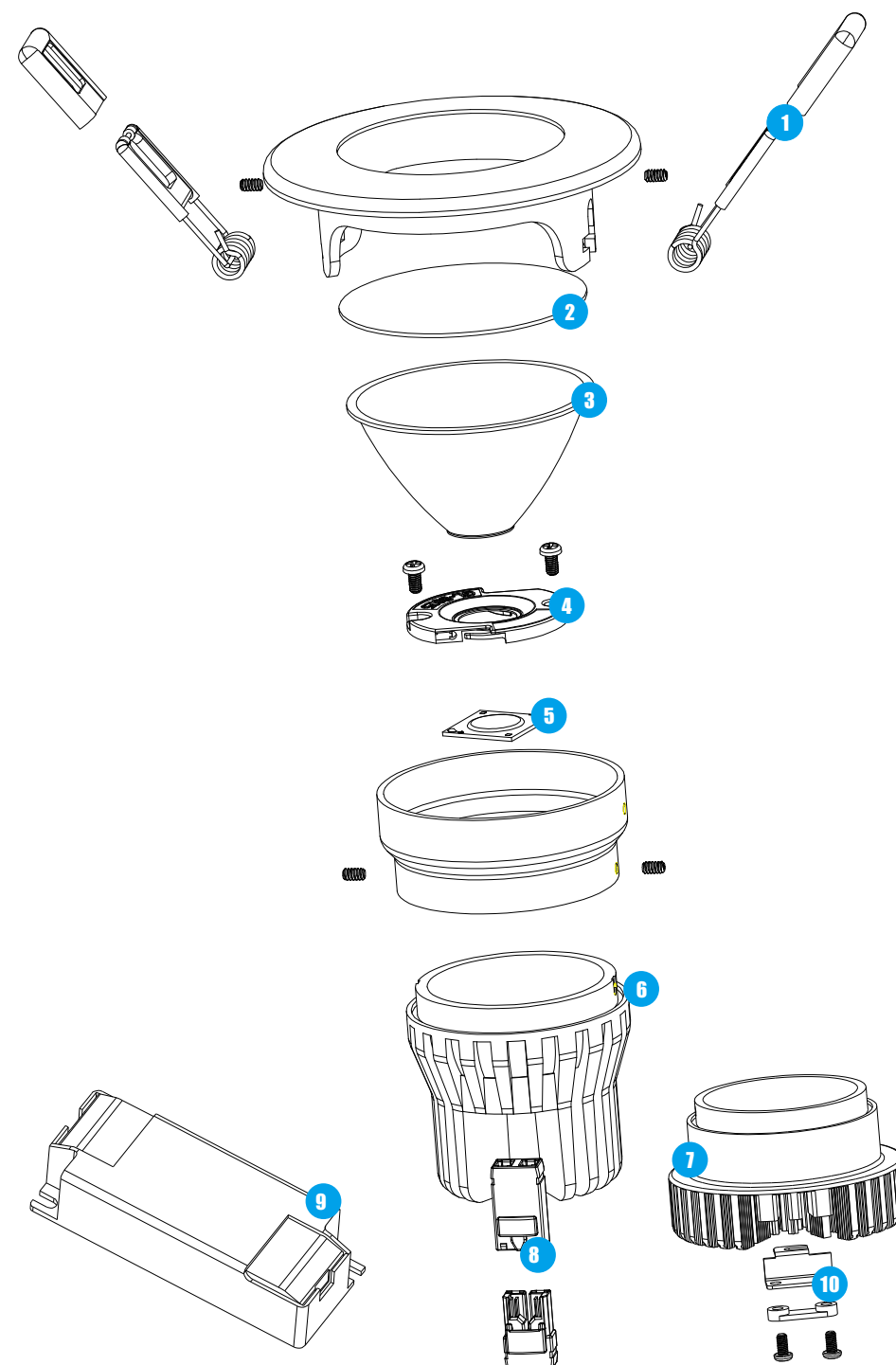
Installation process

1. Ceiling open
2. Connect driver to the power
3. Hold back spring clips. Push the downlight into position
4. Installation finished



- 8 DC connector with anti-pull-off design. Not only beautiful and practical but also meet all certificates standards.

1. Press the rocker switch with one thumb.
2. Pull the DC cable upward with fingers while pushing the radiator downward with another thumb.
3. Separated.



- 1 High-performance spring has passed salt spray test, corrosion resistance test, and anti-decay, ensure no deformation in 10 years.
- 2 Glass with high transmittance. Full tempered type will not endanger your safety even if it is broken.



- 3 Pure aluminum optical reflective cup with beam angle 8-110 degree. The narrow beam angle can be used for wall washing effect.



- 4 Light source connector with free soldering design, which can help to replace LED easily and support different brands of LED.

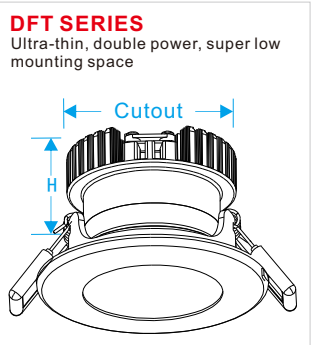
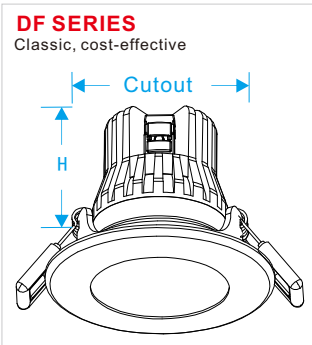
- 5 High quality LED (LM-80) with ceramic substrate.

- 6 Two kinds of radiator. High performance & Cost effective



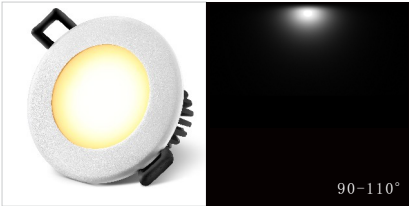
- 9 Flicker free driver with 5 years warranty and almost all certificates. Other famous drivers are available.

- 10 Anti-pull-off connector can ensure the cable will not be pulled out from lamp body by external force.

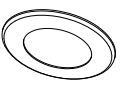



Application:

Widely used as indoor main illumination lighting in household, hotel, restaurant, shopping mall, bar, KTV, cabinet, office meeting room, library, museum, exhibition, etc. Please refer to DH, DG, DS, DX series downlight if have lower UGR required.



Remark: " H " means mounting height

Cutting size	75-85mm	95-110mm	125-140mm	145-170mm	165-190mm	200-240mm	
	DF0775S Power:7W Size:96*H72 DFT1275S Power:12W Size:96*H57	DF1295S Power:12W Size:120*H85 DFT2095S Power:20W Size:120*H75	DF20125S Power:20W Size:150*H97 DFT30125S Power:30W Size:150*H82	DF30145S Power:30W Size:180*H117 DFT40145S Power:40W Size:180*H105	DF40165S Power:40W Size:200*H120 DFT50165S Power:50W Size:200*H115	DF50200S Power:50W Size:250*H135	 Only: DF40165S Only: DF50200S

CCT: 2700K,3000K,4000K,5000K,6000K;

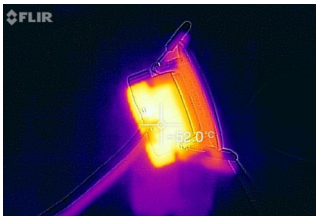
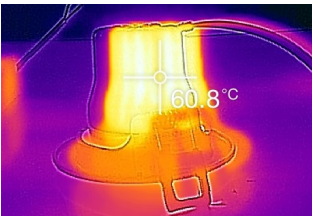
CRI: CRI>90,R9>50/CRI>97,R9>95

UGR<22

Item No.	Power (W)	Size (mm)	Illumination	N. W.	Packing	Beam angle (°)	IP	Input voltage
DF0775S	7W total 8W	96*H72 75-85 (hole)	600-950lm	0.4kg	45*45*37CM 48pcs	20° 38° 55° 110°	IP33	AC100-277V & AC200-240V
DFT1275S	12W total 13W	96*H57 75-85 (hole)	1100-1500lm	0.4kg	45*45*37CM 48pcs			
DF1295S	12W total 13W	120*H85 95-110(hole)	1100-1500lm	0.5kg	53*40*41CM 36pcs	20° 38° 60° 110°		
DFT2095S	20W total 22W	120*H75 95-110(hole)	1600-2500lm	0.6kg	53*40*41CM 36pcs			
DF20125S	20W total 22W	150*H97 125-140(hole)	1600-2500lm	0.9kg	49*49*33CM 18pcs	15° 38° 60° 110°		
DFT30125S	30W total 32W	150*H82 125-140(hole)	2900-3600lm	0.9kg	49*49*33CM 18pcs	20° 38° 60° 110°		
DF30145S	30W total 32W	180*H117 145-170(hole)	2900-3600lm	1.2kg	39*77*32CM 16pcs	15° 38° 60° 110°		
DFT40145S	40W total 42W	180*H105 145-170(hole)	3800-4500lm	1.3kg	39*39*51CM 16pcs			
DF40165S	40W total 42W	200*H120 165-190(hole)	3800-4500lm	1.3kg	43*43*34CM 8pcs	15° 38° 65° 110°		
DFT50165S	50W total 52W	200*H115 165-190(hole)	4800-5500lm	1.6kg	43*43*34CM 8pcs			
DF50200S	50W total 52W	250*H135 200-240(hole)	4800-5500lm	1.9kg	53*53*37CM 8pcs	15° 38° 65° 110°		

Two kind design of radiator: Standard Die-casting radiator (DF series downlight) & Pure aluminum lower height but high power Cold forging radiator (DFT series downlight).

Eg: 75mm cutting downlight **DFT1275S**, the lowest installation height is **57mm**, and the max power can be 12W.

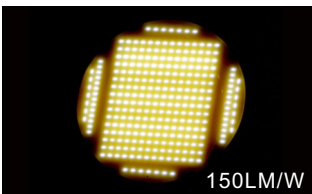


Support lighting for food like meat, vegetables and bread, making the food more charming.

The specialized LED+Reflector of lamps for food display can highlight the freshness of food with the most appropriate lighting color, so that the food color under our lighting is closer to or even better than the real color itself. For example, baked food looks more crispy with the golden brown light, and meat looks more bright red with the pink light.



Self-design BESUN COB LED with Epistar chip, ceramic PCB and pure gold thread, which has features of high light efficiency, high CRI, high stability, low light decay, low SDCM, etc.The most representative feature of BESUN COB LED: 150lm/W under CRI>90, R9>50 & 3000K, and the highest CRI can be CRI>97. Also, even if half of the chips don't work, just less than 20% reduction in luminous efficiency.



Support Triac dim, 1-10V dim, Dali dim, DMX dim, 2.4G dim, Perfectly compatible with almost all famous light source & driver: Philips, CREE, CITIZEN, Tridonic, Osram, Lifud, Eaglerise, Meanwell, etc.



Power 7-12W can be CCT adjustable from 2000K to 2800K by Triac dimmable. Lower CCT, low power & lumen will be lower relatively. And 2800K will be with highest luminous flux output.

Power 20-50W can be CCT adjustable from 2700K to 5700K, but power keep the same, and the brightness depends on current CCT only.