

SHC SERIES



SHC series is a fixed surface mounted downlight, which strike a balance between high lumen and low UGR. Special series of SXC and SSC are available with lower UGR 15-17. -- Patent Design!

Fixed design, no rotatable, anti-glare downlight,
Different color of anti-glare shield & housing for option, the lowest UGR can be 16---Patent design!

Support almost all the famous Light source and Driver
Perfectly compatible with the same light fixture, same size with different light source and different driver

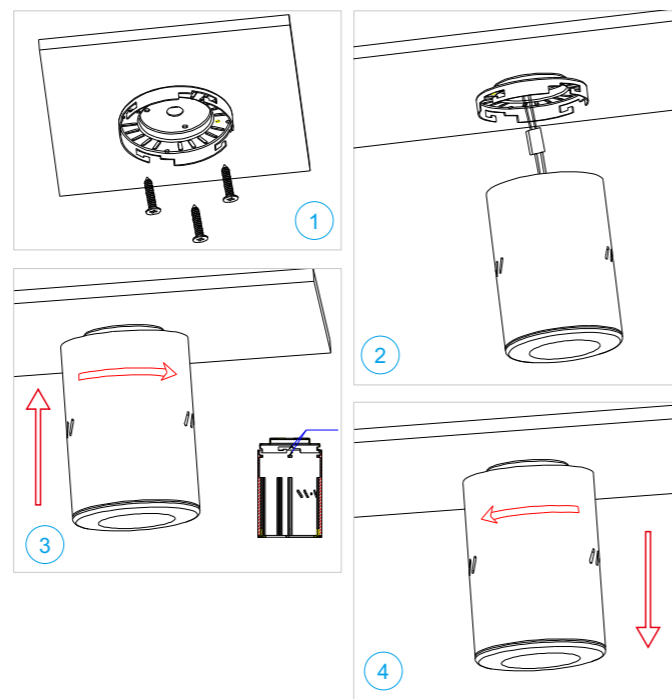
Completely free solder assembling
Replace any accessories perfectly without any damages, no need soldering tools

Perfect secondary optical design:
Optional beam angle: 8 - 90 deg, can be used for wall washing effect

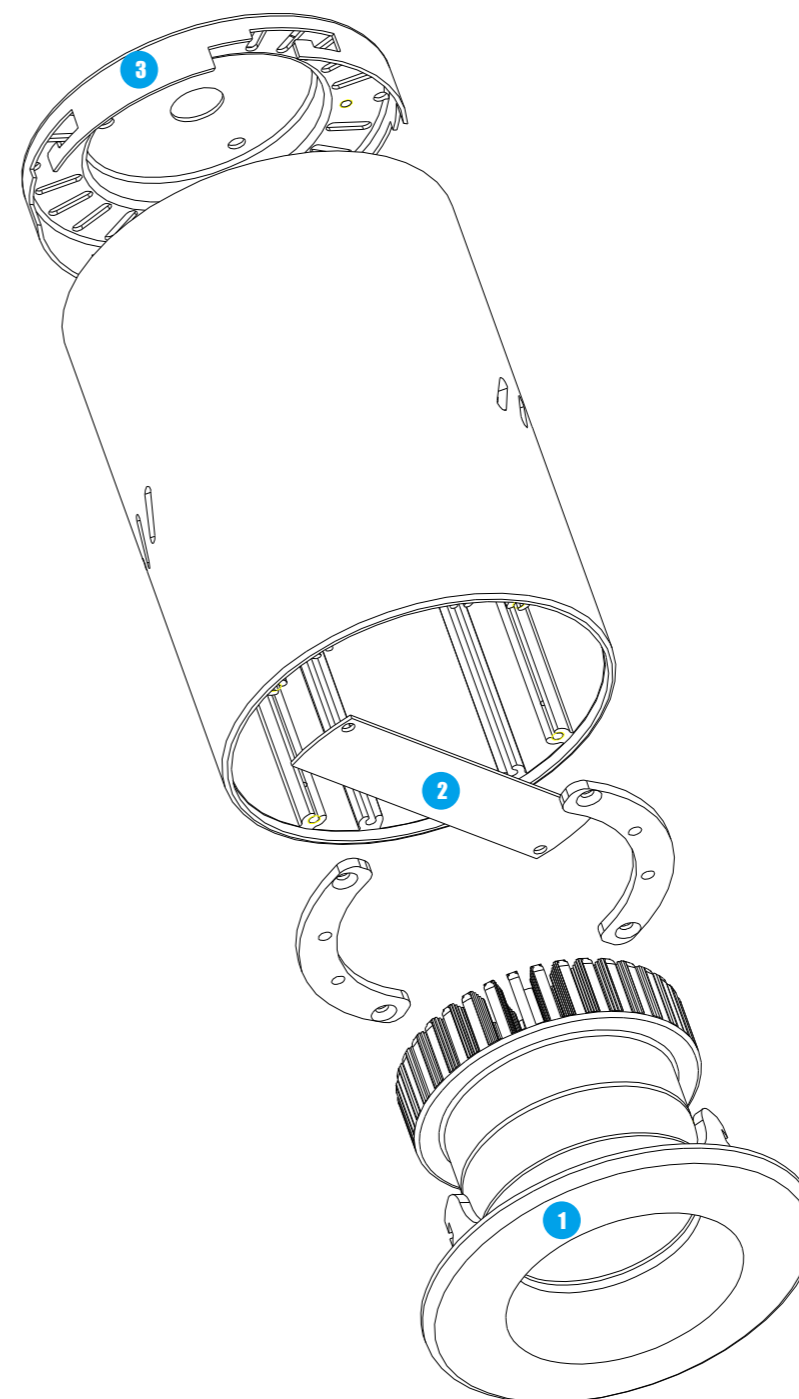
High CRI, High lumens, Low decay LED (L-80)
Basic characteristic: 150lm/w under CRI>90 & 3000K

Flicker free driver & 5 years warranty for whole lamp
Support Triac dim, 1-10V dim, DALI dim, DMX dim, 2.4G dim, warm dim, etc.

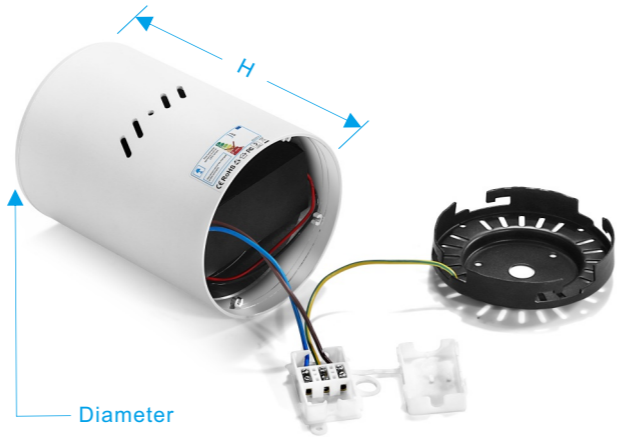
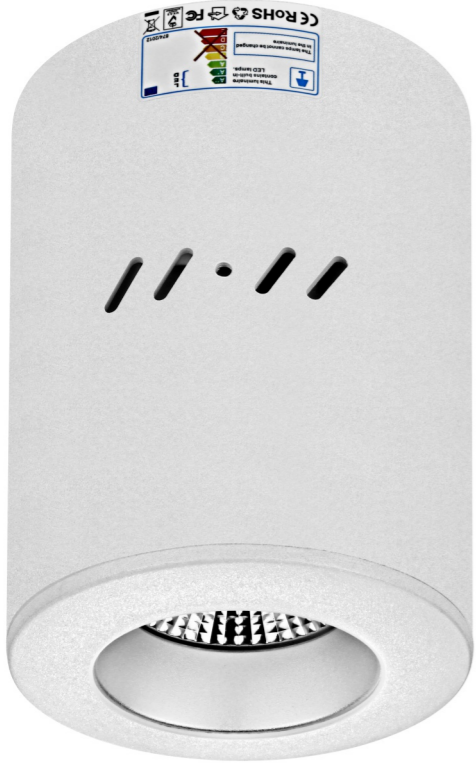
12-40W LED DOWNLIGHT



- ① Thread cables through the top plate and fix the top plate on ceiling.
- ② Connect the cables.
- ③ Align & push up the sleeve/lamp body to top plate correctly, and then rotate the sleeve clockwise to lock it with top plate.
- ④ Pull down and rotate the lamp anticlockwise to check if it is fixed well. Push up and rotate the lamp anticlockwise if wanna take down the lamp (Must push up first before rotation).

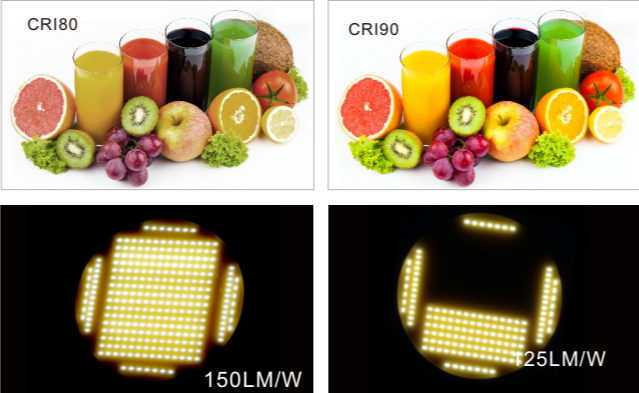


- ① SHC series downlight, with maximum power 40W, has same photoelectric parameter as DHT series's. Please refer to page 17 for it.
- ② Flicker free driver with 5 years warranty and almost all certificates. Other famous drivers are available.
- ③ Multifunctional top plate supports suspended mounting.



Application:
Widely used as indoor main illumination lighting in household, hotel, restaurant, shopping mall, bar, KTV, cabinet, office meeting room, library, museum, exhibition, etc.

Self-design BESUN COB LED with Epistar chip, ceramic PCB and pure gold thread, which has features of high light efficiency, high CRI, high stability, low light decay, low SDCM, etc. The most representative feature of BESUN COB LED: 150lm/W under CRI>90, R9>50 & 3000K, and the highest CRI can be CRI>97. Also, even if half of the chips don't work, just less than 20% reduction in luminous efficiency.



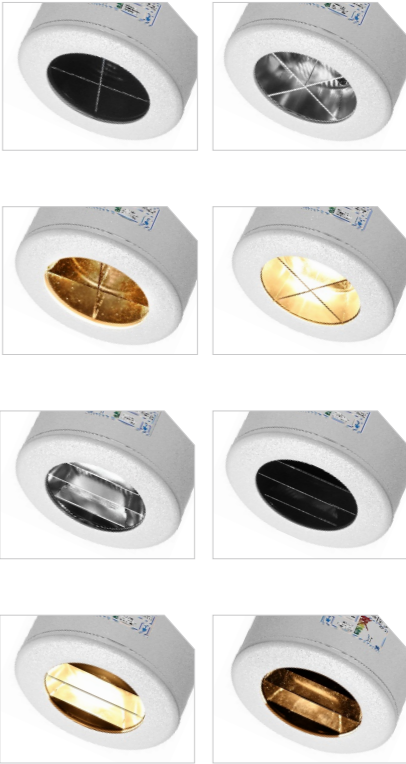
Support Triac dim, 1-10V dim, Dali dim, DMX dim, 2.4G dim, Perfectly compatible with almost all famous light source & driver: Philips, CREE, CITIZEN, Tridonic, Osram, Lifud, Eaglerise, Meanwell, etc.



Power 7-12W can be CCT adjustable from 2000K to 2800K by Triac dimmable. Lower CCT, low power & lumen will be lower relatively. And 2800K will be with highest luminous flux output.

Power 20-40W can be CCT adjustable from 2700K to 5700K, but power keep the same, and the brightness depends on current CCT only.

SXC and SSC series downlight are designed for some special place which people may need to look up directly. Such as clothes store, elevator, over the dining-table, etc.



Remark: " H " means mounting height

Diameter	96mm	120mm	150mm	180mm
	SHC1296S Power:12W Size:96*H145	SHC20120S Power:20W Size:120*H160	SHC30150S Power:30W Size:150*H185	SHC40180S Power:40W Size:180*H210

CCT: 2700K,3000K,4000K,5000K,6000K ;
CRI: CRI>90,R9>50/CRI>97,R9>95

SHC,UGR<17
SXC,SSC,UGR<12

Item No.	SHC1296S	SHC20120S	SHC30150S	SHC40180S
Power(W)	12W total 13W	20W total 22W	30W total 32W	40W total 42W
Size(mm)	96*H145	120*H160	150*H185	180*H210
Illumination	1000-1400lm	1500-2400lm	2500-3400lm	3600-4300lm
Beam angle	25° 38° 50° 90°	20° 38° 50° 90°	20° 38° 55° 90°	20° 38° 55° 95°
N. W.	0.7kg	1.1kg	1.9kg	2.6kg
Packing	45*45*37CM 32pcs	53*40*41CM 24pcs	49*49*27CM 9pcs	39*39*51CM 8pcs
IP	IP33			
Input voltage	AC100-277V or AC200-240V			

