

# SBC SERIES



## 12-40W LED DOWNLIGHT

SBC series is a classic surface mounted downlight with rotation. The greatest advantage is super high CRI, light efficiency > 100 lm/w under 3000K & CRI>90 on whole lamp ---Patent Design!

### Rotatable angle of illumination

Special rotatable design: The maximum rotation angle is 30 degrees, Rotation lifespan is more than 200 times.

### Support almost all the famous Light source and Driver

Perfectly compatible with the same light fixture, same size with different light source and different driver

### Completely free solder assembling

Replace any accessories perfectly without any damages, no need soldering tools

### Perfect secondary optical design:

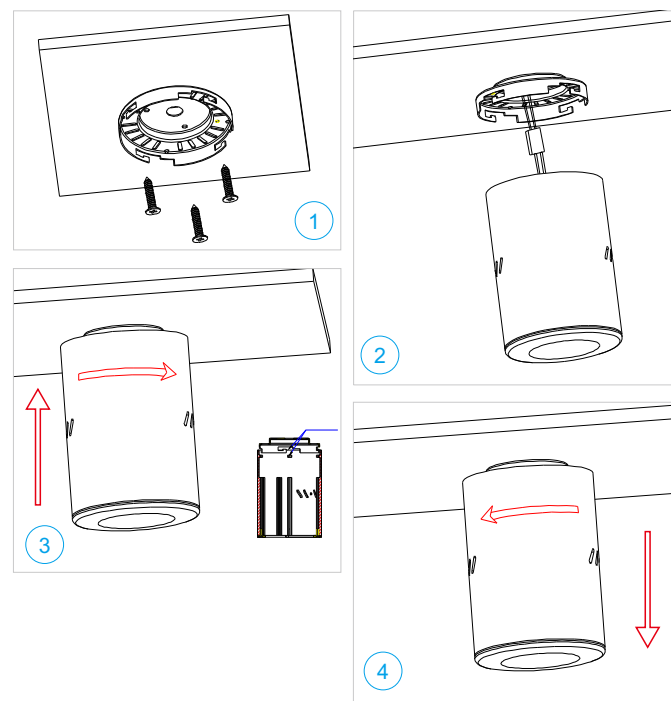
Optional beam angle: 8 - 110 deg, can be used for wall washing effect

### High CRI, High lumens, Low decay LED (L-80)

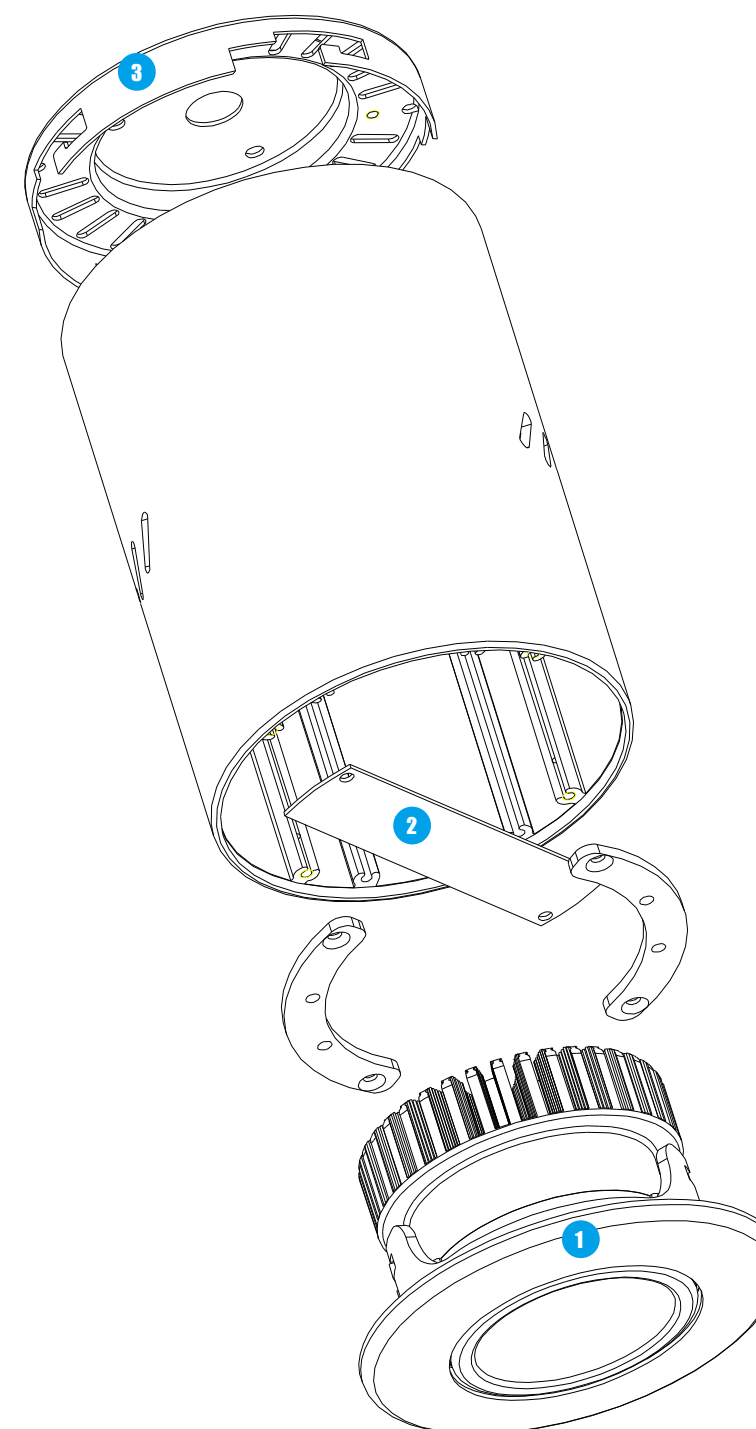
Basic characteristic: 150lm/w under CRI>90 & 3000K

### Flicker free driver & 5 years warranty for whole lamp

Support Triac dim, 1-10V dim, DALI dim, DMX dim, 2.4G dim, warm dim, etc.

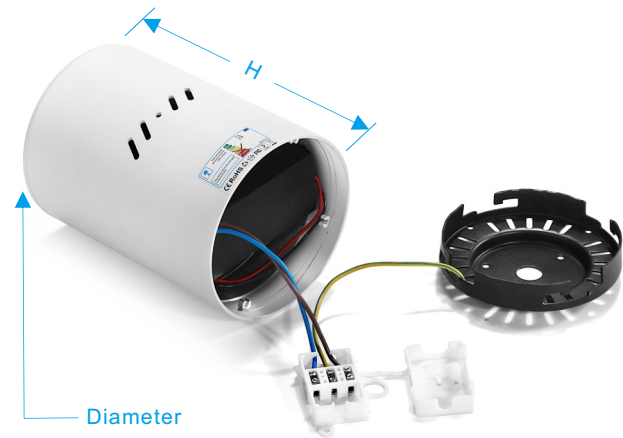
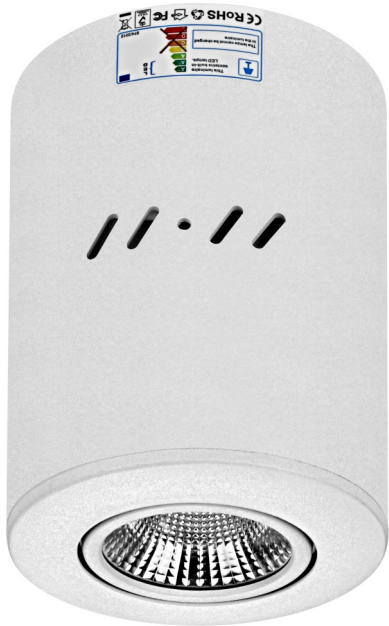


- 1 Thread cables through the top plate and fix the top plate on ceiling.
- 2 Connect the cables.
- 3 Align & push up the sleeve/lamp body to top plate correctly, and then rotate the sleeve clockwise to lock it with top plate.
- 4 Pull down and rotate the lamp anticlockwise to check if it is fixed well. Push up and rotate the lamp anticlockwise if wanna take down the lamp (Must push up first before rotation).

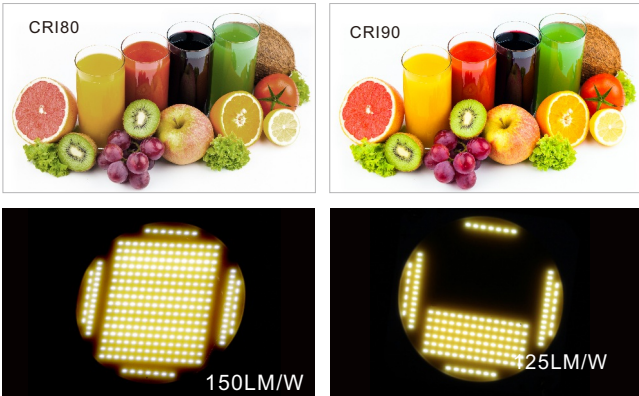


- 1 SBC series downlight, with maximum power 40W, has same photoelectric parameter as DBT series's. Please refer to page 07 for it.
- 2 Flicker free driver with 5 years warranty and almost all certificates. Other famous drivers are available.
- 3 Multifunctional top plate supports suspended mounting.



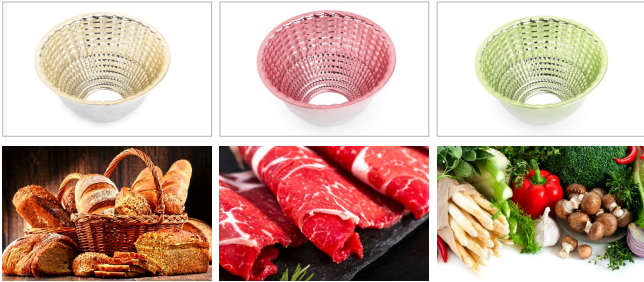


Self-design BESUN COB LED with Epistar chip, ceramic PCB and pure gold thread, which has features of high light efficiency, high CRI, high stability, low light decay, low SDCM, etc. The most representative feature of BESUN COB LED: 150lm/W under CRI>90, R9>50 & 3000K, and the highest CRI can be CRI>97. Also, even if half of the chips don't work, just less than 20% reduction in luminous efficiency.



Support lighting for food like meat, vegetables and bread, making the food more charming.

The specialized LED+Reflector of lamps for food display can highlight the freshness of food with the most appropriate lighting color, so that the food color under our lighting is closer to or even better than the real color itself. For example, baked food looks more crispy with the golden brown light, and meat looks more bright red with the pink light.



Support Triac dim, 1-10V dim, Dali dim, DMX dim, 2.4G dim, Perfectly compatible with almost all famous light source & driver: Philips, CREE, CITIZEN, Tridonic, Osram, Lifud, Eaglerise, Meanwell, etc.

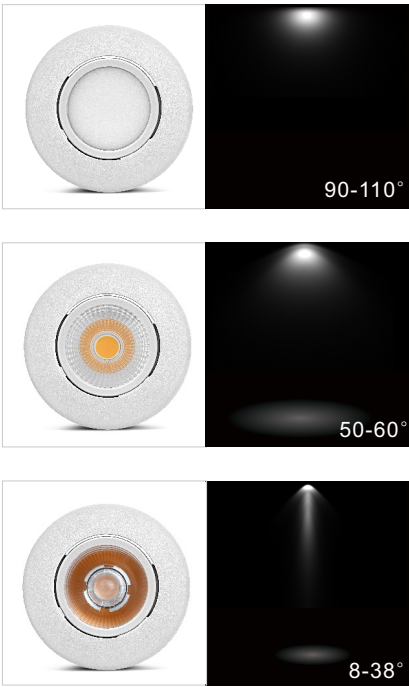
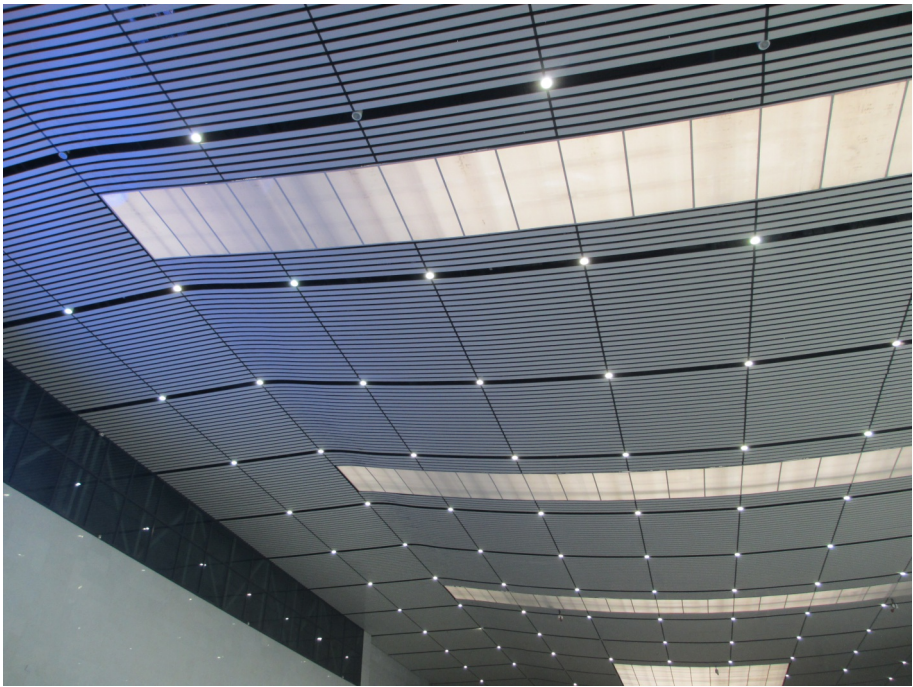


Power 7-12W can be CCT adjustable from 2000K to 2800K by Triac dimmable. Lower CCT, low power & lumen will be lower relatively. And 2800K will be with highest luminous flux output.

Power 20-40W can be CCT adjustable from 2700K to 5700K, but power keep the same, and the brightness depends on current CCT only.

**Application:**

Widely used as indoor main illumination lighting in household, hotel, restaurant, shopping mall, bar, KTV, cabinet, office meeting room, library, museum, exhibition, etc. Please refer to SHC, SGC, SSC, SXC series downlight if have lower UGR required.



**Remark: " H " means mounting height**

Diameter	96mm	120mm	150mm	180mm
	SBC1296S Power:12W Size:96*H145	SBC20120S Power:20W Size:120*H160	SBC30150S Power:30W Size:150*H185	SBC40180S Power:40W Size:180*H210

CCT: 2700K,3000K,4000K,5000K,6000K;  
CRI: CRI>90,R9>50/CRI>97,R9>95

**UGR<24**

Item No.	SBC1296S	SBC20120S	SBC30150S	SBC40180S
Power(W)	12W total 13W	20W total 22W	30W total 32W	40W total 42W
Size(mm)	96*H145	120*H160	150*H185	180*H210
Illumination	1100-1500lm	1600-2500lm	2900-3600lm	3800-4500lm
Beam angle	25° 38° 55° 110°	20° 38° 60° 110°	15° 38° 60° 110°	20° 38° 60° 110°
N. W.	0.7kg	1.1kg	1.8kg	2.6kg
Packing	45*45*37CM 32pcs	53*40*41CM 24pcs	49*49*27CM 9pcs	39*39*51CM 8pcs
IP	IP33			
Input voltage	AC100-277V or AC200-240V			