



# SFP SERIES 7-30W LED DOWNLIGHT



SFP series is partial recessed which will do well with some structure like

— Patent Design!

**Fixed design, no rotatable downlight,**  
Larger light emitting area and smaller beam angle, different color of housing for option.

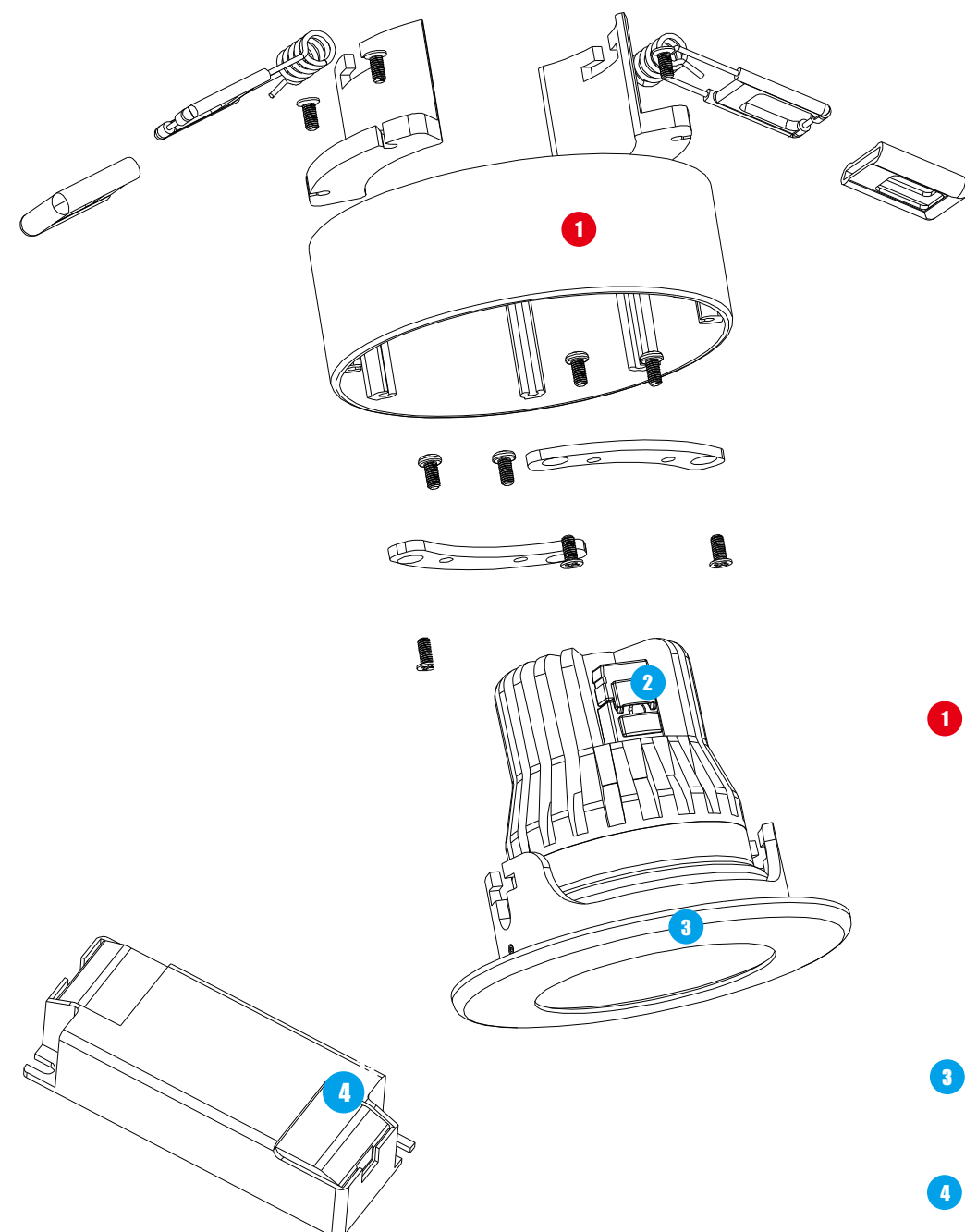
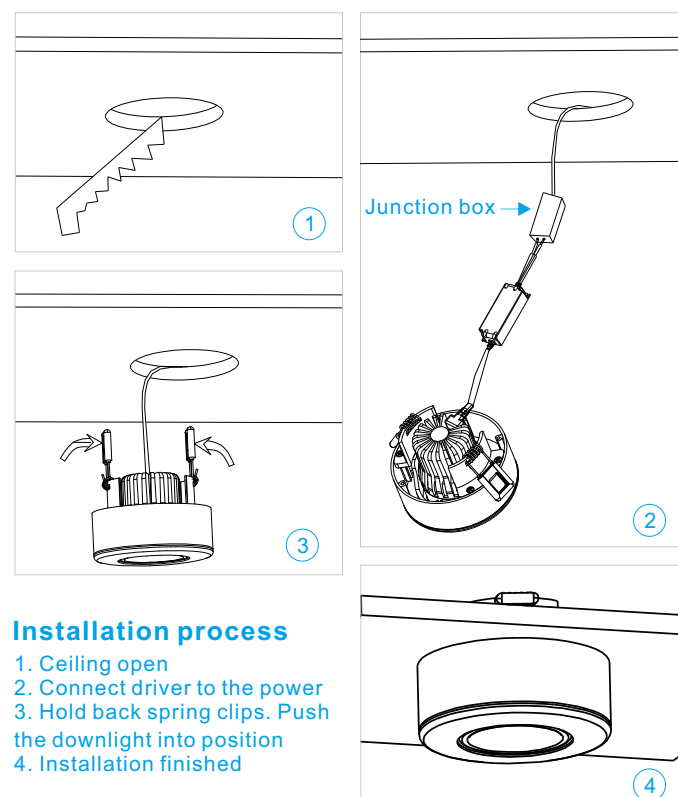
**Support almost all the famous Light source and Driver**  
Perfectly compatible with the same light fixture, same size with different light source and different driver

**Completely free solder assembling**  
Replace any accessories perfectly without any damages, no need soldering tools

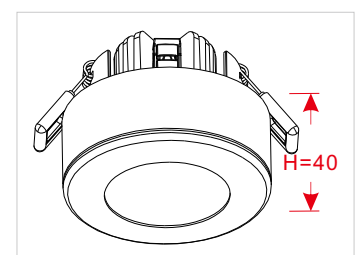
**Perfect secondary optical design:**  
Optional beam angle: 8 - 110 deg, can be used for wall washing effect

**High CRI, High lumens, Low decay LED (L-80)**  
Basic characteristic: 150lm/w under CRI>90 & 3000K

**Flicker free driver & 5 years warranty for whole lamp**  
Support Triac dim, 1-10V dim, DALI dim, DMX dim, 2.4G dim, warm dim, etc.



**1** The standard height of SFP series is 40mm. Customized height is available.



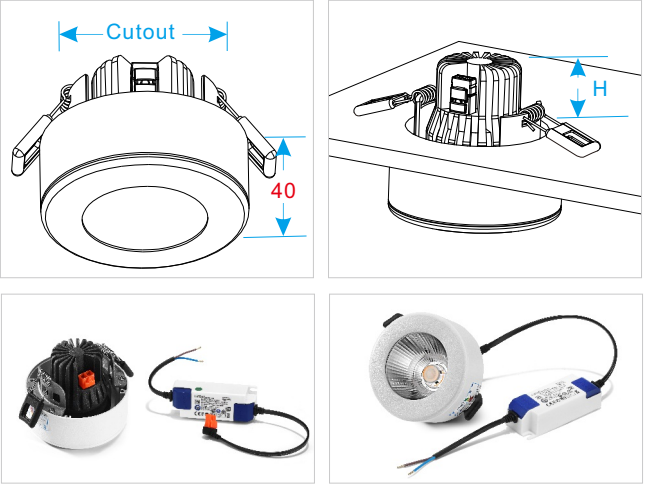
**3** The max power of SFP series is 30W. All photoelectric parameters are same as DF series's.

**4** Flicker free driver with 5 years warranty and almost all certificates. Other famous drivers are available.



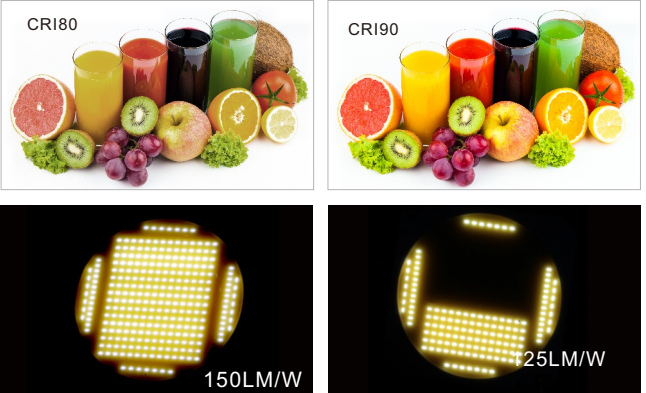


The standard height of SFP series is 40mm. Customized height is available.



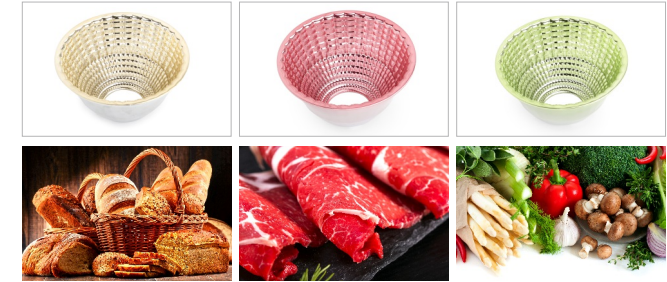
**Application:**  
Widely used as indoor main illumination lighting in household, hotel, restaurant, shopping mall, bar, KTV, cabinet, office meeting room, library, museum, exhibition, etc. Please refer to SHP, SGP, SSP, SXP series downlight if have lower UGR required.

Self-design BESUN COB LED with Epistar chip, ceramic PCB and pure gold thread, which has features of high light efficiency, high CRI, high stability, low light decay, low SDCM, etc. The most representative feature of BESUN COB LED: 150lm/W under CRI>90, R9>50 & 3000K, and the highest CRI can be CRI>97. Also, even if half of the chips don't work, just less than 20% reduction in luminous efficiency.



**Support lighting for food like meat, vegetables and bread, making the food more charming.**

The specialized LED+Reflector of lamps for food display can highlight the freshness of food with the most appropriate lighting color, so that the food color under our lighting is closer to or even better than the real color itself. For example, baked food looks more crispy with the golden brown light, and meat looks more bright red with the pink light.



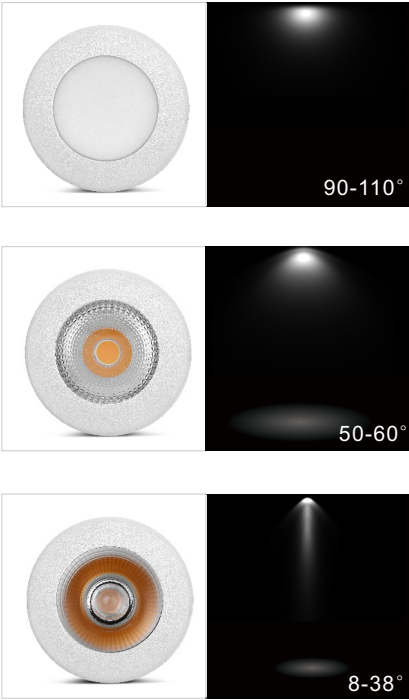
**Support Triac dim, 1-10V dim, Dali dim, DMX dim, 2.4G dim, Perfectly compatible with almost all famous light source & driver: Philips, CREE, CITIZEN, Tridonic, Osram, Lifud, Eaglerise, Meanwell, etc.**



**Power 7-12W can be CCT adjustable from 2000K to 2800K by Triac dimmable. Lower CCT, low power & lumen will be lower relatively. And 2800K will be with highest luminous flux output.**

**Power 20-30W can be CCT adjustable from 2700K to 5700K, but power keep the same, and the brightness depends on current CCT only.**

**SFP series is partial recessed which will do well with some structure like**



**Remark: " H " means mounting height**

Cutting size	75-85mm	95-110mm	125-140mm	145-170mm
	SFP0775S Power:7W Size:96*H38	SFP1295S Power:12W Size:120*H51	SFP20125S Power:20W Size:150*H63	SFP30145S Power:30W Size:180*H83

**CCT: 2700K,3000K,4000K,5000K,6000K;  
CRI: CRI>90,R9>50/CRI>97,R9>95**

**UGR<22**

Item No.	SFP0775S	SFP1295S	SFP20125S	SFP30145S
Power(W)	7W total 8W	12W total 13W	20W total 22W	30W total 32W
Size(mm)	96*H38 75-85(hole)	120*H51 95-110(hole)	150*H63 125-140(hole)	180*H83 145-170(hole)
Illumination	600-900lm	1100-1500lm	1600-2500lm	2900-3600lm
Beam angle	20° 38° 55° 110°	20° 38° 60° 110°	15° 38° 60° 110°	15° 38° 60° 110°
N. W.	0.5kg	0.7kg	1.2kg	1.7kg
Packing	45*45*37CM 48pcs	53*40*41CM 36pcs	49*49*33CM 18pcs	77*39*32CM 16pcs
IP	IP33			
Input voltage	AC100-277V or AC200-240V			