



SBP SERIES 7-30W LED DOWNLIGHT



SBP series is partial recessed with rotation which will do well with some structure like

---Patent Design!

Rotatable angle of illumination

Special rotatable design: The maximum rotation angle is 30 degrees, Rotation lifespan is more than 200 times.

Support almost all the famous Light source and Driver

Perfectly compatible with the same light fixture, same size with different light source and different driver

Completely free solder assembling

Replace any accessories perfectly without any damages, no need soldering tools

Perfect secondary optical design:

Optional beam angle: 8 - 110 deg, can be used for wall washing effect

Physically waterproof and dustproof

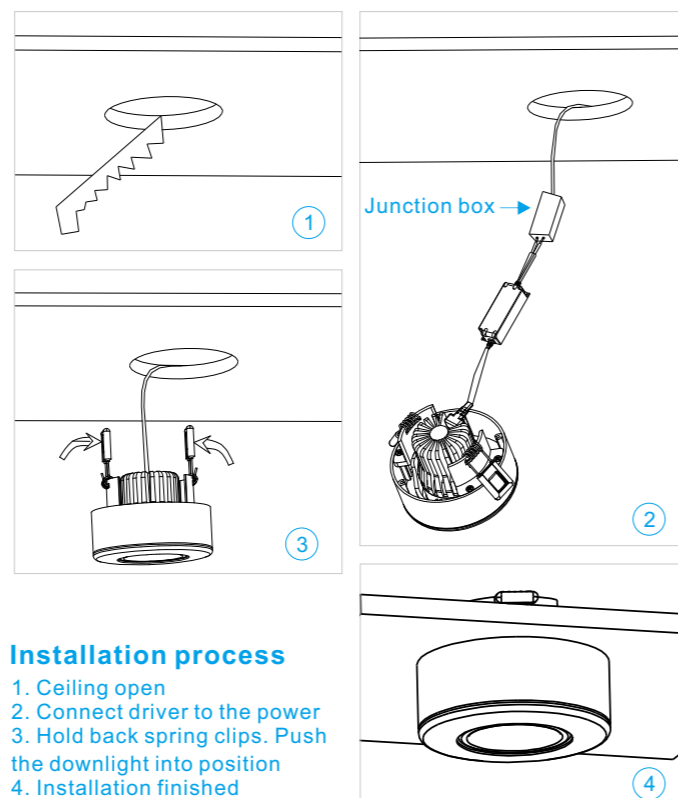
The highest IP rating reaches IP54

High CRI, High lumens, Low decay LED (L-80)

Basic characteristic: 150lm/w under CRI>90 & 3000K

Flicker free driver & 5 years warranty for whole lamp

Support Triac dim, 1-10V dim, DALI dim, DMX dim, 2.4G dim, warm dim, etc.



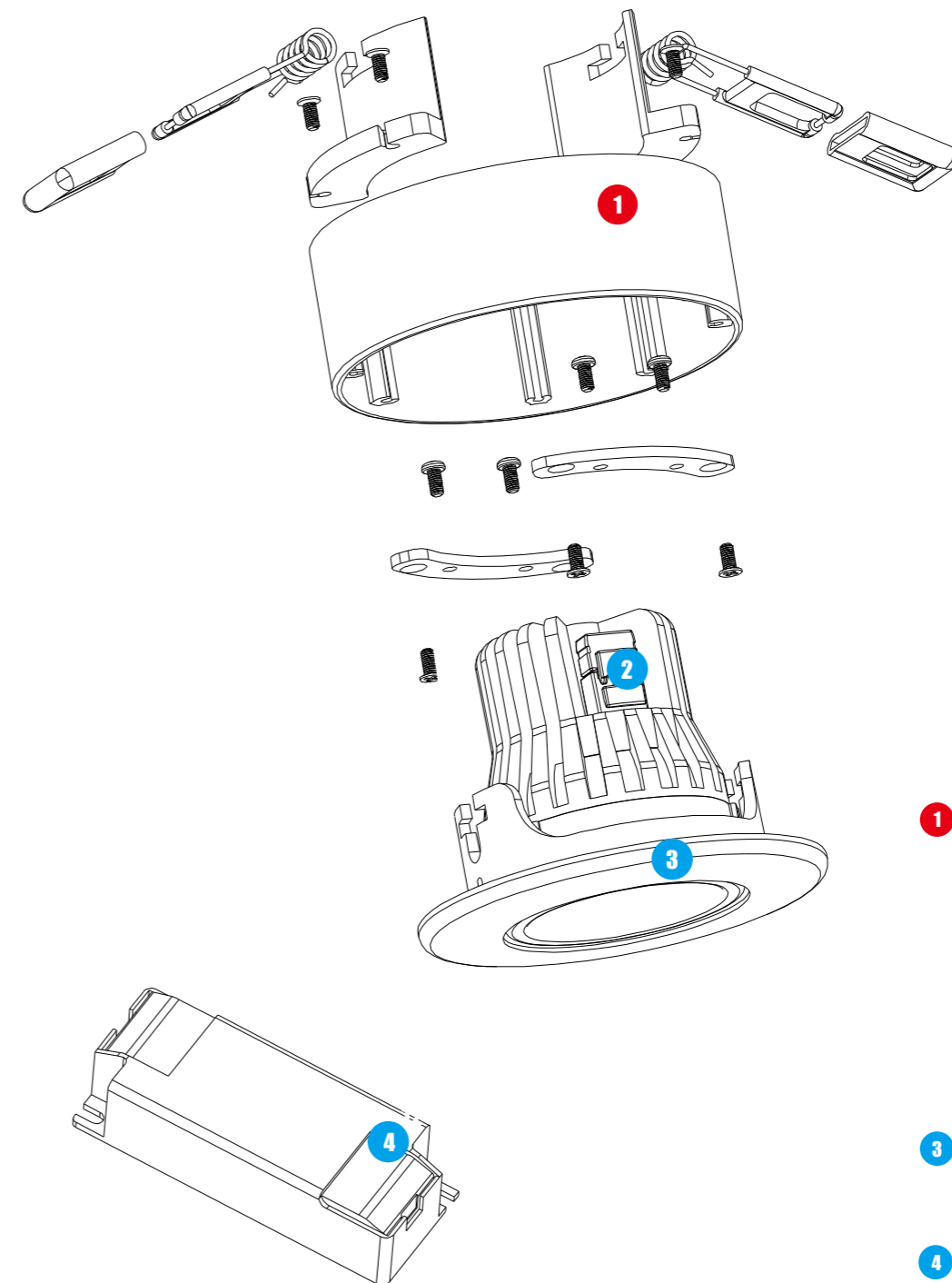
Installation process

1. Ceiling open
2. Connect driver to the power
3. Hold back spring clips. Push the downlight into position
4. Installation finished

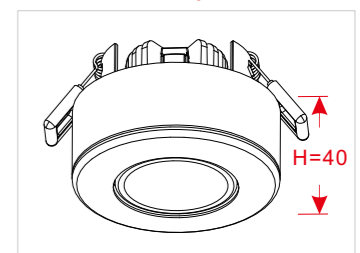


2 DC connector with anti-pull-off design. Not only beautiful and practical but also meet all certificates standards.

1. Press the rocker switch with one thumb.
2. Pull the DC cable upward with fingers while pushing the radiator downward with another thumb.
3. Separated.



1 The standard height of SBP series is 40mm. Customized height is available.

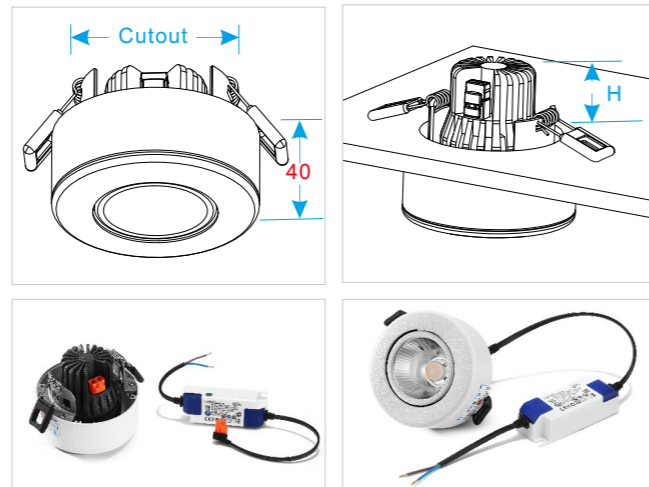


3 The max power of SBP series is 30W. All photoelectric parameters are same as DB series's.

4 Flicker free driver with 5 years warranty and almost all certificates. Other famous drivers are available.



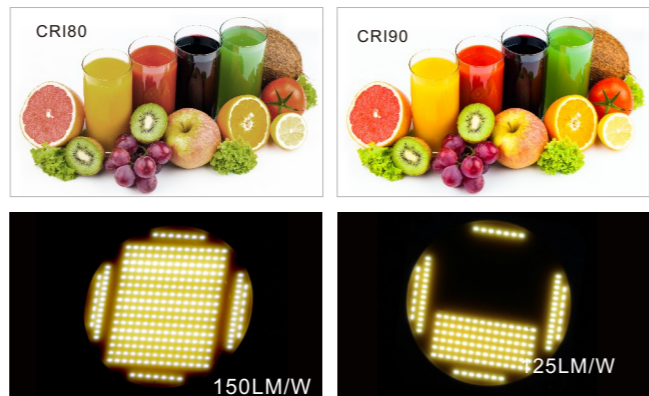
The standard height of SBP series is 40mm. Customized height is available.



Application:

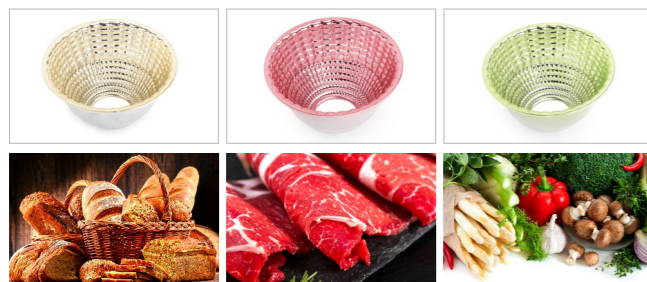
Widely used as indoor main illumination lighting in household, hotel, restaurant, shopping mall, bar, KTV, cabinet, office meeting room, library, museum, exhibition, etc. Please refer to SHP, SGP, SSP, SXP series downlight if have lower UGR required.

Self-design BESUN COB LED with Epistar chip, ceramic PCB and pure gold thread, which has features of high light efficiency, high CRI, high stability, low light decay, low SDCM, etc. The most representative feature of BESUN COB LED: 150lm/W under CRI>90, R9>50 & 3000K, and the highest CRI can be CRI>97. Also, even if half of the chips don't work, just less than 20% reduction in luminous efficiency.



Support lighting for food like meat, vegetables and bread, making the food more charming.

The specialized LED+Reflector of lamps for food display can highlight the freshness of food with the most appropriate lighting color, so that the food color under our lighting is closer to or even better than the real color itself. For example, baked food looks more crispy with the golden brown light, and meat looks more bright red with the pink light.



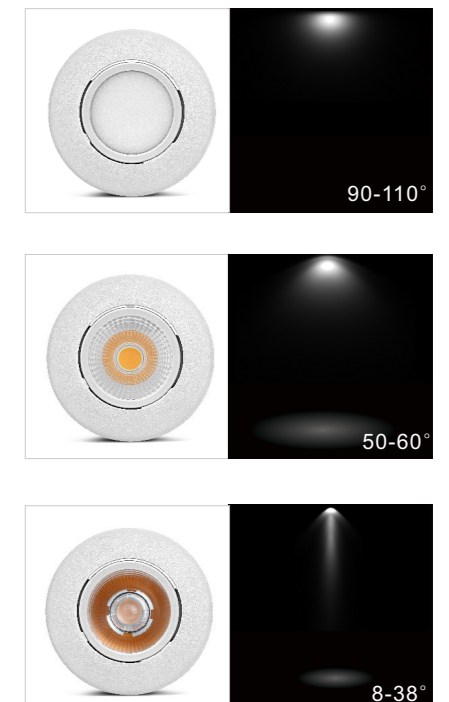
Support Triac dim, 1-10V dim, Dali dim, DMX dim, 2.4G dim, Perfectly compatible with almost all famous light source & driver: Philips, CREE, CITIZEN, Tridonic, Osram, Lifud, Eaglerise, Meanwell, etc.



Power 7-12W can be CCT adjustable from 2000K to 2800K by Triac dimmable. Lower CCT, low power & lumen will be lower relatively. And 2800K will be with highest luminous flux output.

Power 20-30W can be CCT adjustable from 2700K to 5700K, but power keep the same, and the brightness depends on current CCT only.

SBP series is partial recessed with rotation which will do well with some structure like



Remark: " H " means mounting height

Cutting size	75-85mm	95-110mm	125-140mm	145-170mm
	SBP0775S Power:7W Size:96*H29	SBP1295S Power:12W Size:120*H44	SBP20125S Power:20W Size:150*H56	SBP30145S Power:30W Size:180*H71

CCT: 2700K,3000K,4000K,5000K,6000K;
CRI: CRI>90,R9>50/CRI>97,R9>95

UGR<24

Item No.	SBP0775S	SBP1295S	SBP20125S	SBP30145S
Power (W)	7W total 8W	12W total 13W	20W total 22W	30W total 32W
Size (mm)	96*H29 75-85 (hole)	120*H44 95-110(hole)	150*H56 125-140(hole)	180*H71 145-170(hole)
Illumination	600-950lm	1100-1500lm	1600-2500lm	2900-3600lm
Beam angle	25° 38° 55° 110°	20° 38° 60° 110°	15° 38° 60° 110°	20° 38° 60° 110°
N. W.	0.5kg	0.7kg	1.1kg	1.6kg
Packing	45*45*37CM 48pcs	53*40*41CM 36pcs	49*49*33CM 18pcs	77*39*32CM 16pcs
IP	IP33 or IP54			
Input voltage	AC100-277V or AC200-240V			